



# MetroWest+

## Portishead Branch Line (MetroWest Phase 1)

TR040011

**Applicant: North Somerset District Council**

**6.25, Environmental Statement, Volume 4, Appendix 17.1, Flood Risk Assessment, Part 9 of 17**

**Appendix N Part 4 of 8, Simulated River Avon flood maps – tidal events, 2115**

**The Infrastructure Planning (Applications: Prescribed Forms and Procedure)**

**Regulations 2009, regulation 5(2)(a)**

**Planning Act 2008**

**Author: CH2M**

**Date: November 2019**







# Notice

© Copyright 2019 CH2M HILL United Kingdom. The concepts and information contained in this document are the property of CH2M HILL United Kingdom, a wholly owned subsidiary of Jacobs. Use or copying of this document in whole or in part without the written permission of Jacobs constitutes an infringement of copyright.

Limitation: This document has been prepared on behalf of, and for the exclusive use of Jacobs' client, and is subject to, and issued in accordance with, the provisions of the contract between Jacobs and the client. Jacobs accepts no liability or responsibility whatsoever for, or in respect of, any use of, or reliance upon, this document by any third party.

Where any data supplied by the client or from other sources have been used, it has been assumed that the information is correct. No responsibility can be accepted by Jacobs for inaccuracies in the data supplied by any other party. The conclusions and recommendations in this report are based on the assumption that all relevant information has been supplied by those bodies from whom it was requested. Where field investigations have been carried out, these have been restricted to a level of detail required to achieve the stated objectives of the work. This work has been undertaken in accordance with the quality management system of Jacobs.

## Document history

<b>Project</b>	Portishead Branch Line (MetroWest Phase 1) Development Consent Order Scheme
<b>Planning Inspectorate Scheme Reference</b>	TR040011
<b>Volume and Application Document Reference</b>	6, 6.25
<b>Document title</b>	Environmental Statement, Volume 4, Appendix 17.1, Flood Risk Assessment, Part 9 of 17 Appendix N Part 4 of 8, Simulated River Avon flood maps – tidal events, 2115
<b>Regulation Number</b>	Regulation 5(2)(a)
<b>Applicant</b>	North Somerset District Council
<b>Lead Author</b>	RB at CH2M

<b>Version</b>	<b>Date</b>	<b>Status of Version</b>
Rev: 01	12/11/19	Application Issue



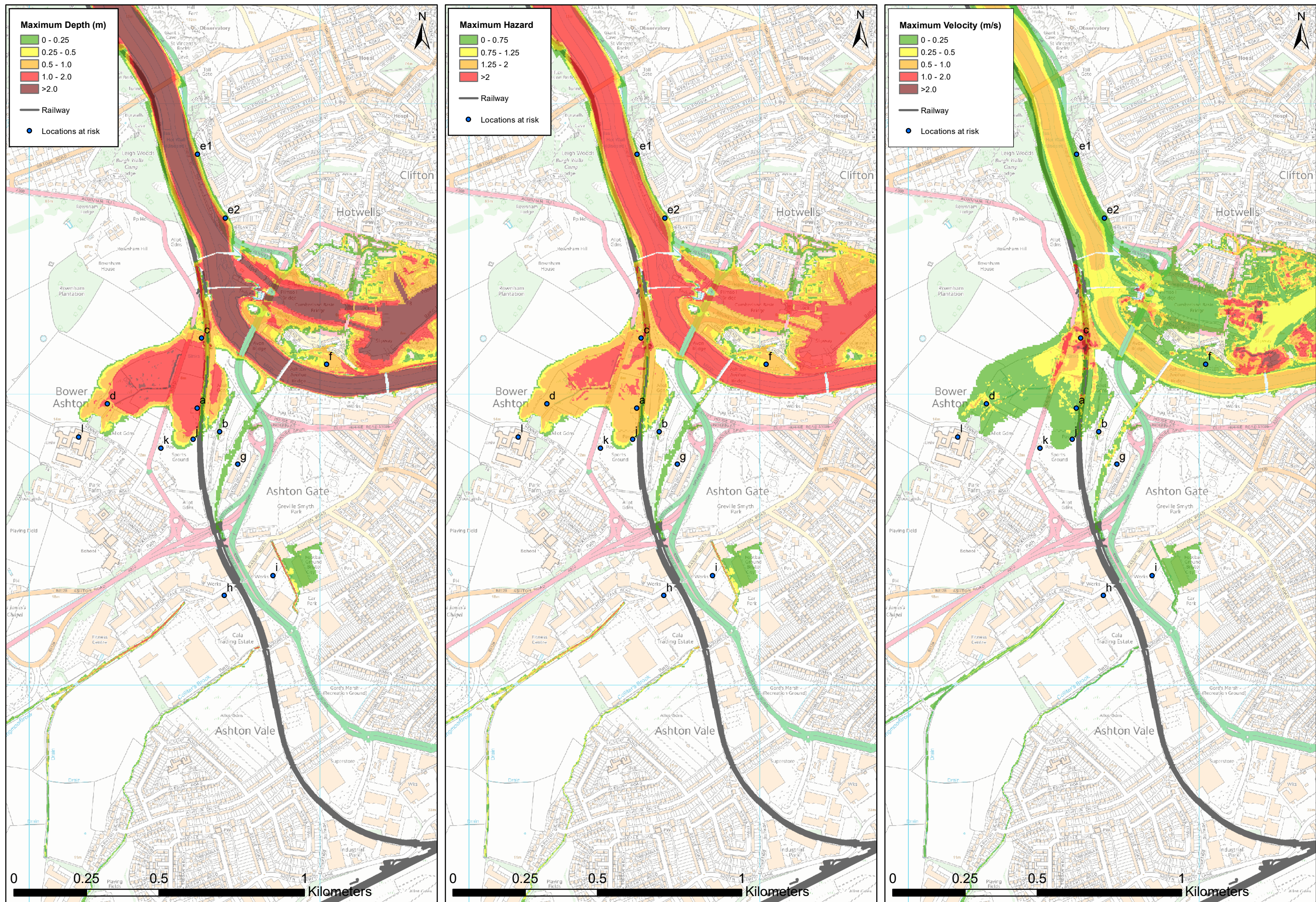


Figure N-21: Pre Development, 10year return period event in 2115 ,Tidal



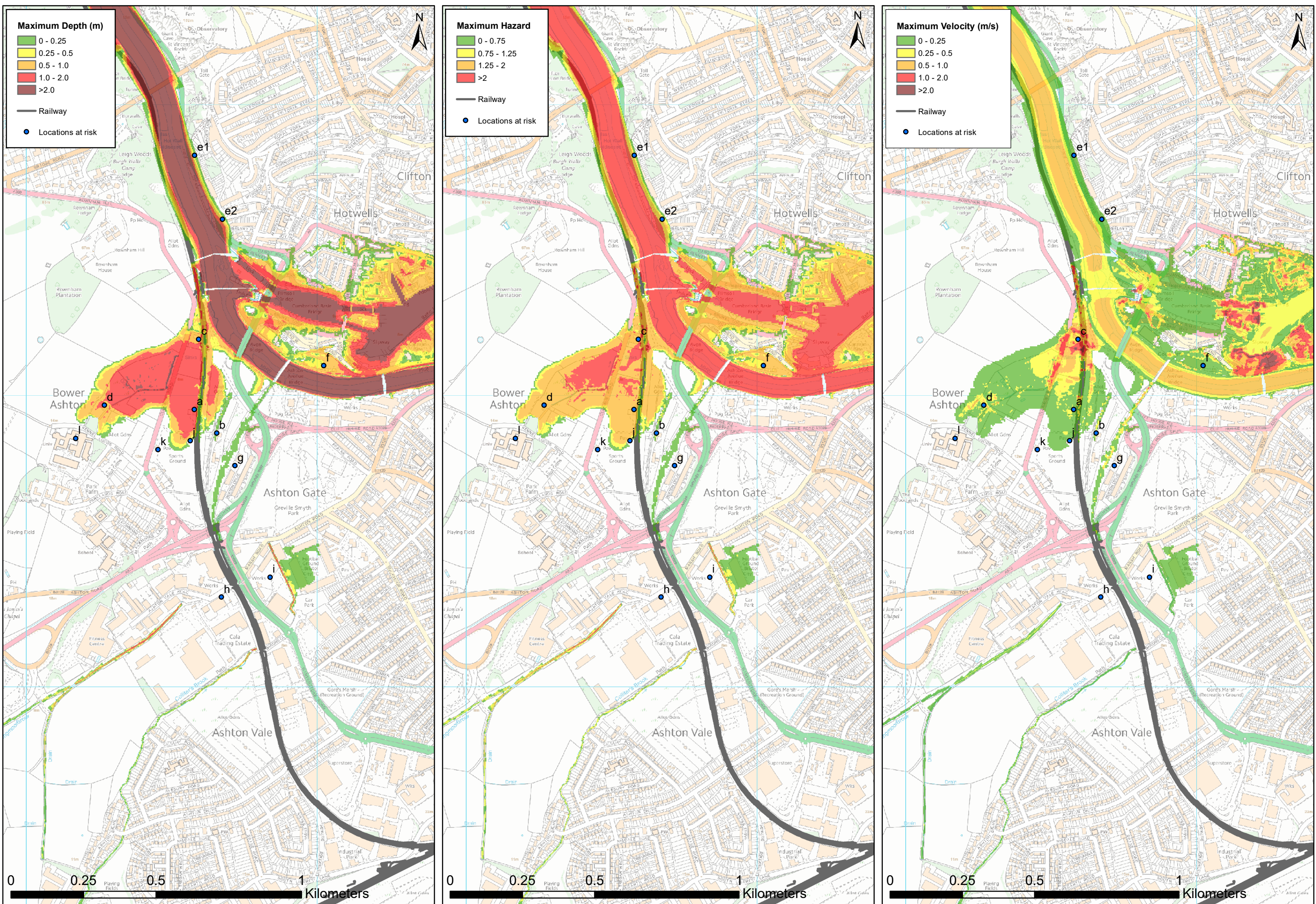


Figure N-22: Post Development, 10year return period event in 2115 ,Tidal



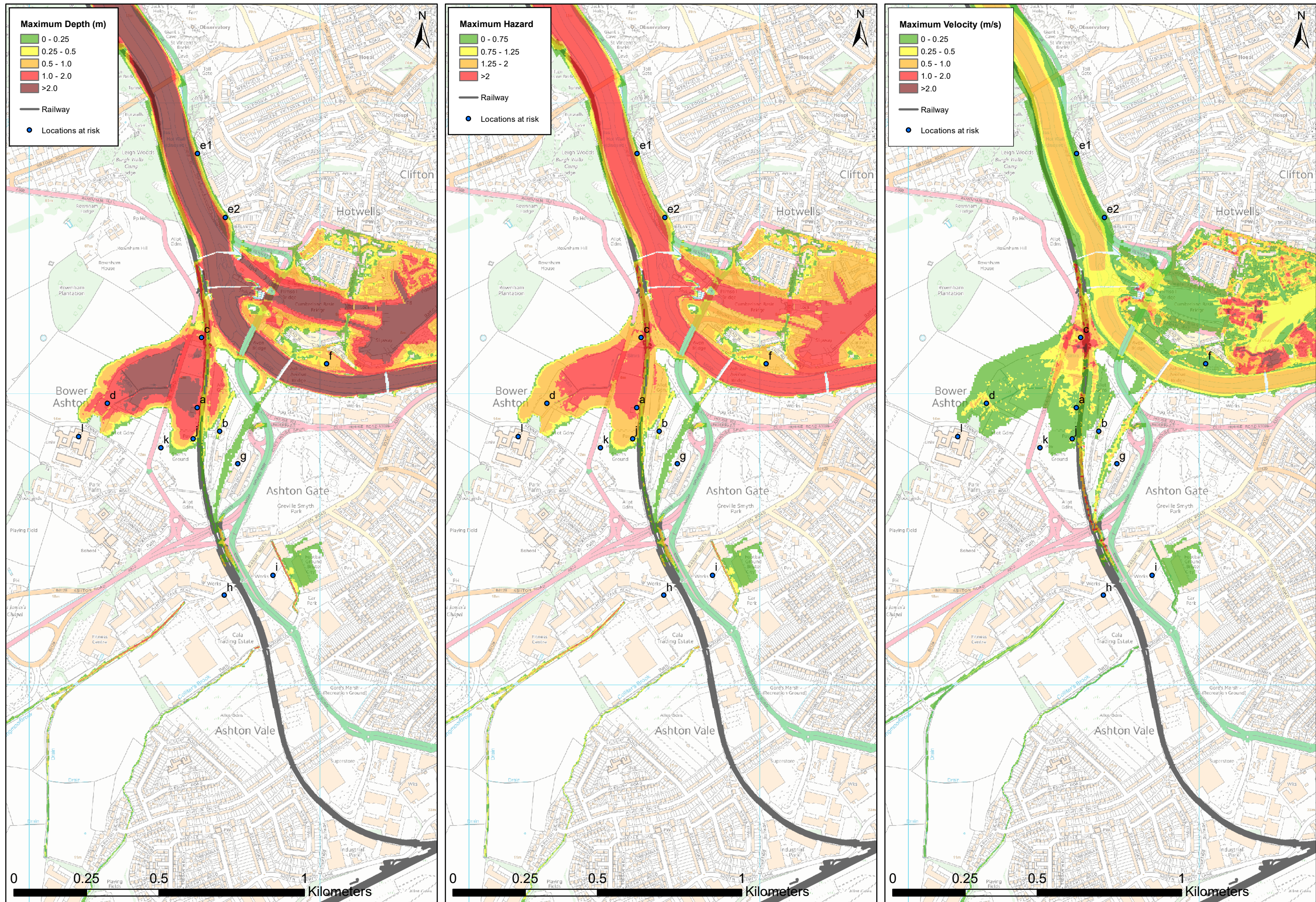


Figure N-23: Pre Development, 20year return period event in 2115 ,Tidal



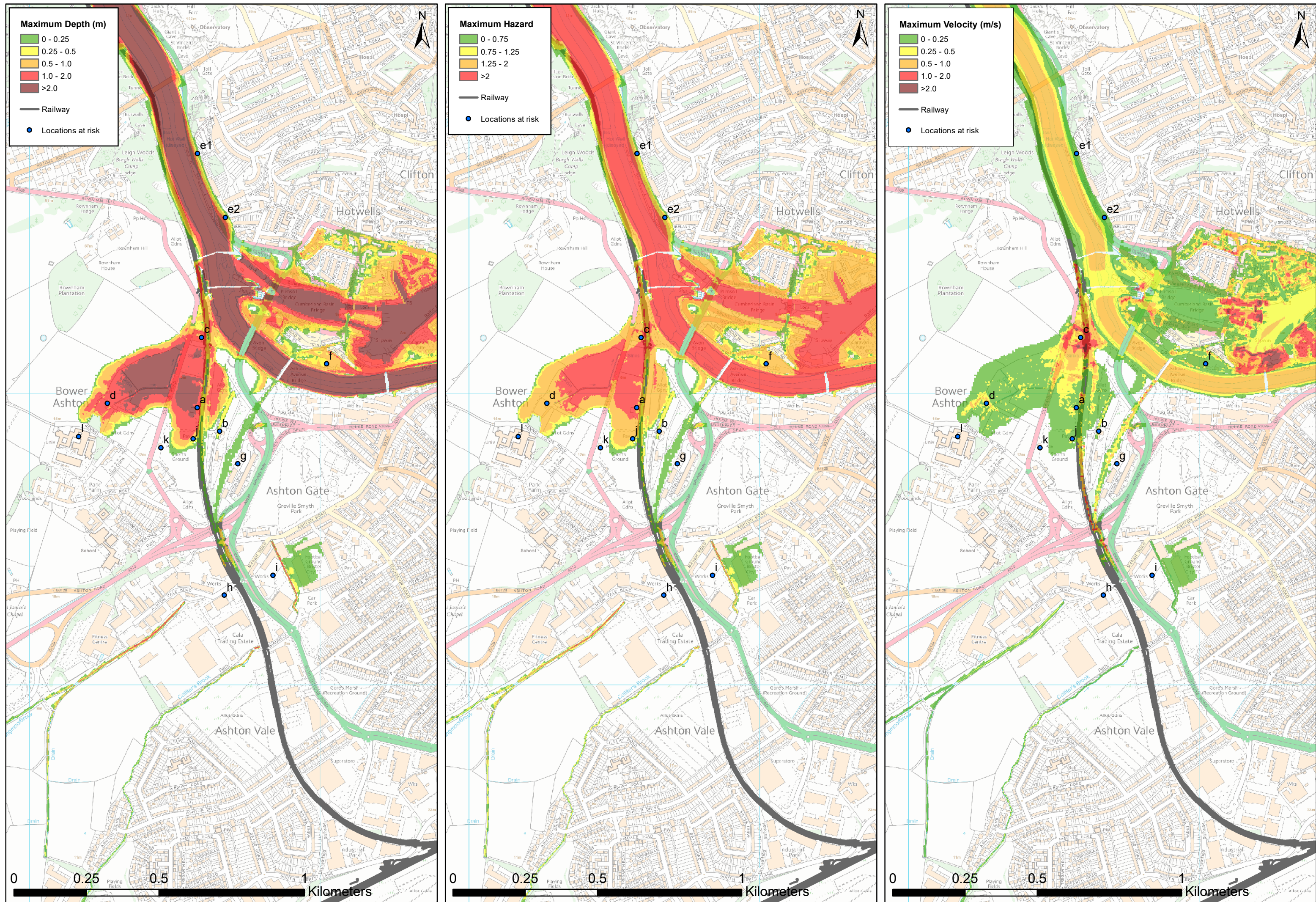


Figure N-24: Post Development, 20year return period event in 2115 ,Tidal



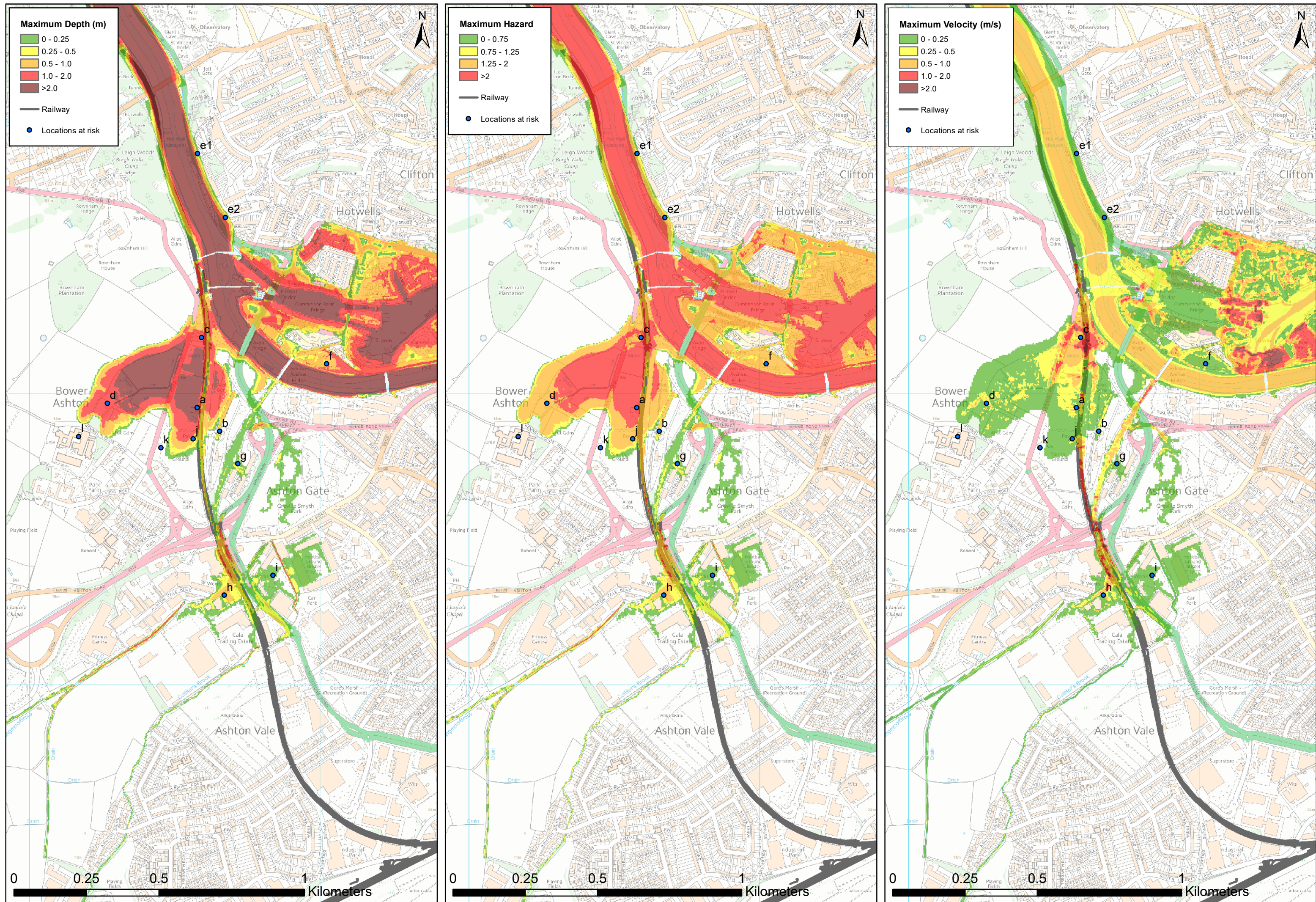


Figure N-25: Pre Development, 75year return period event in 2115 ,Tidal



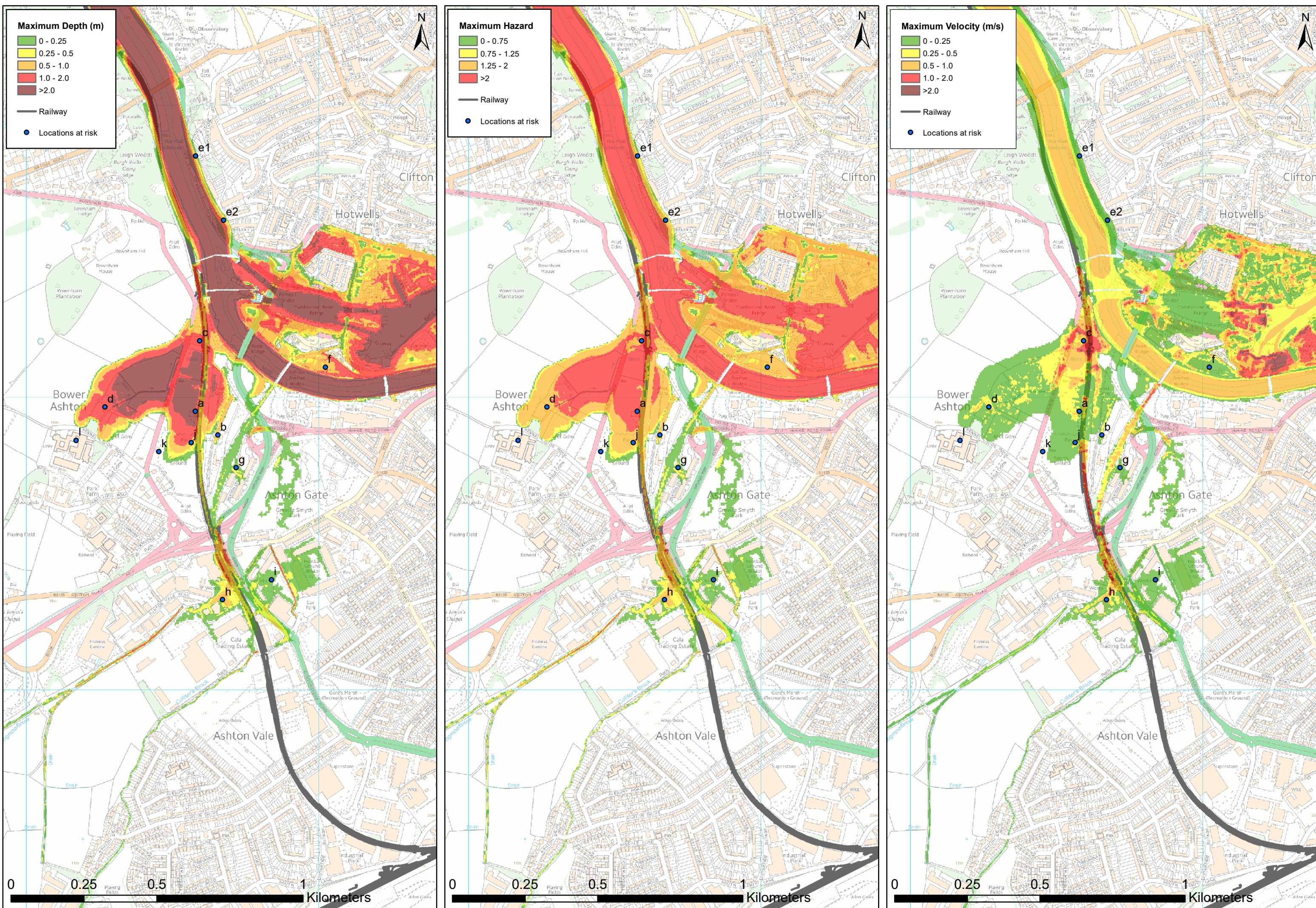


Figure N-26: Post Development, 75year return period event in 2115 ,Tidal



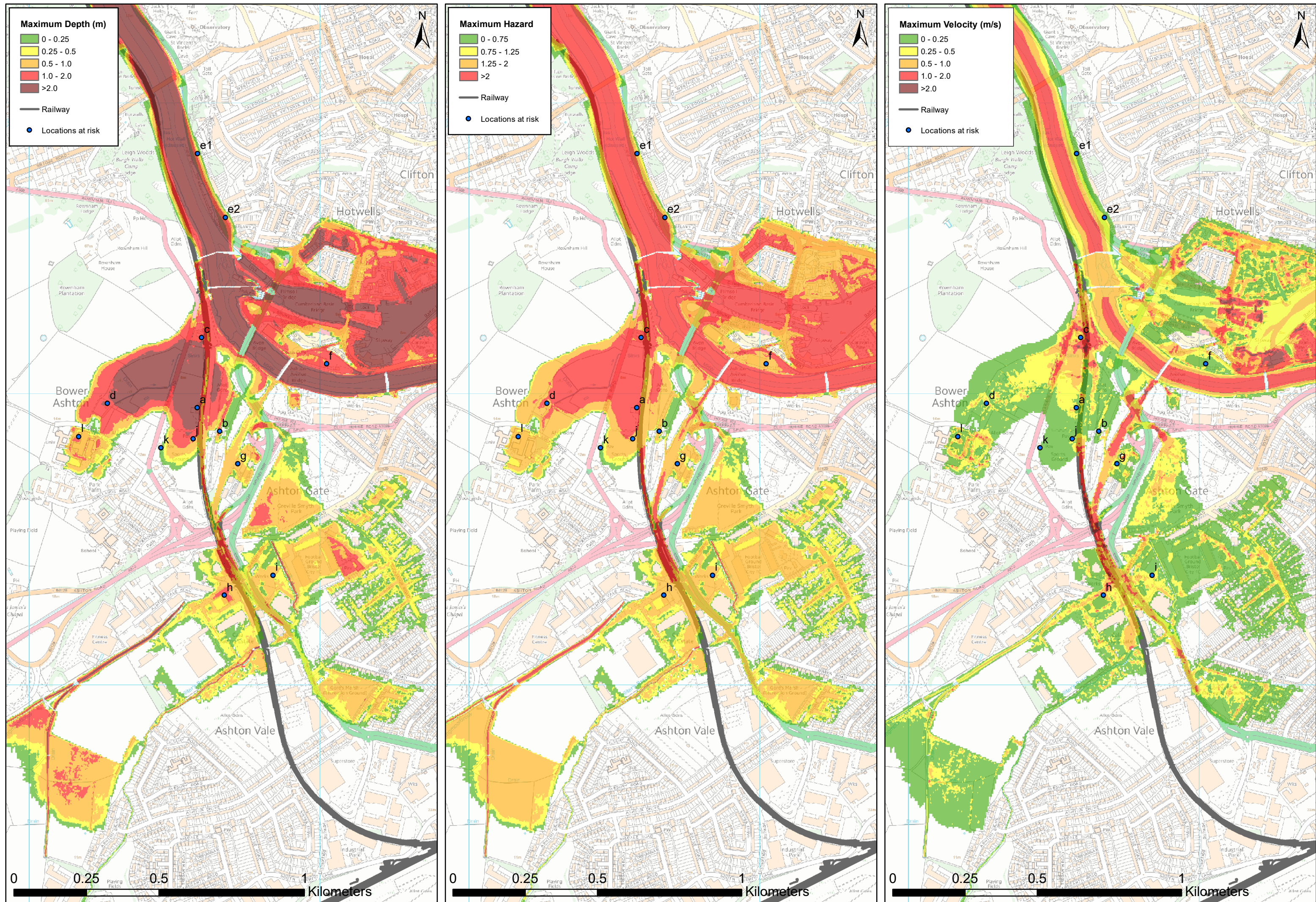


Figure N-27: Pre Development, 200year rertun period event in 2115 ,Tidal



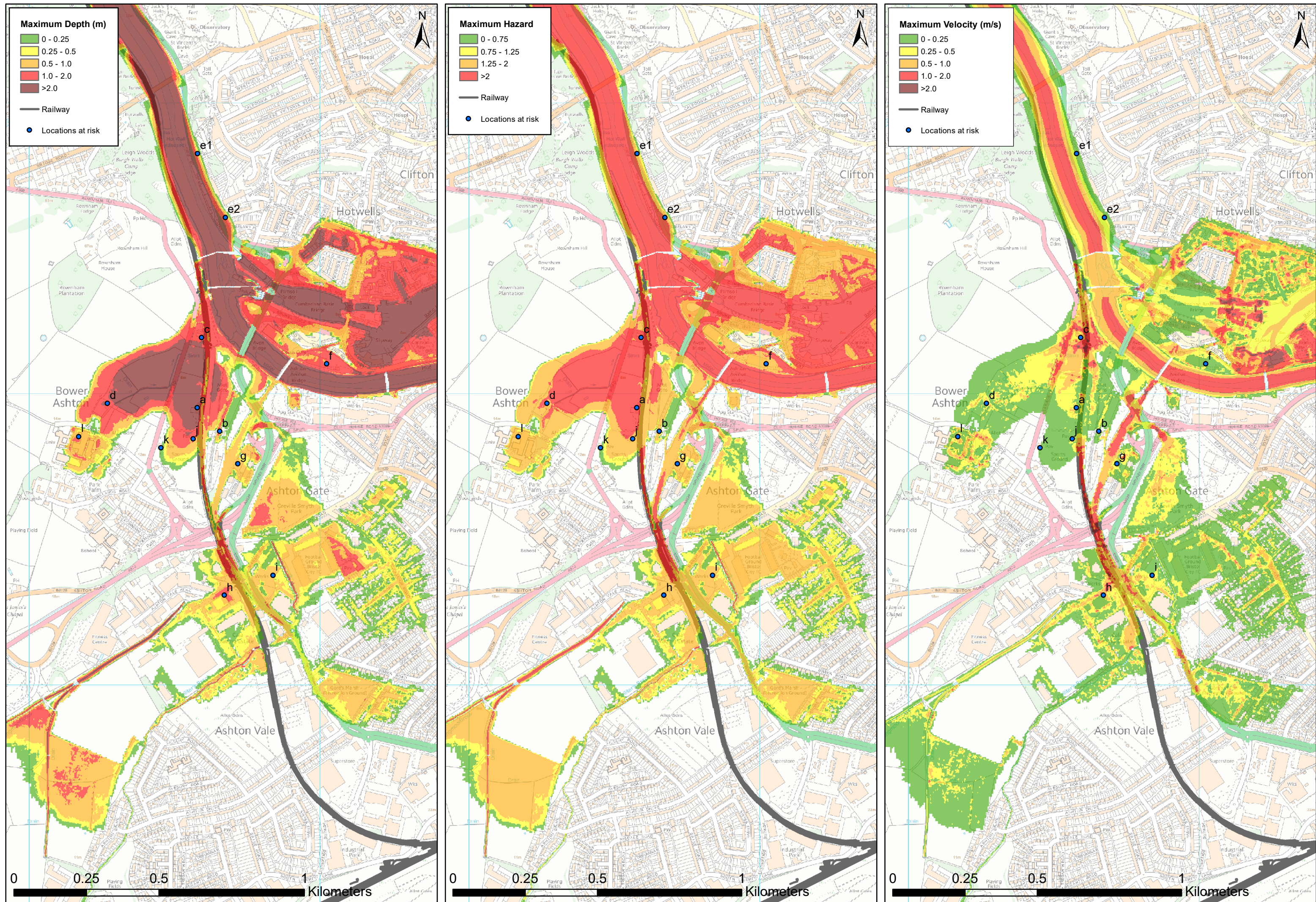


Figure N-28: Post Development, 200year return period event in 2115 ,Tidal



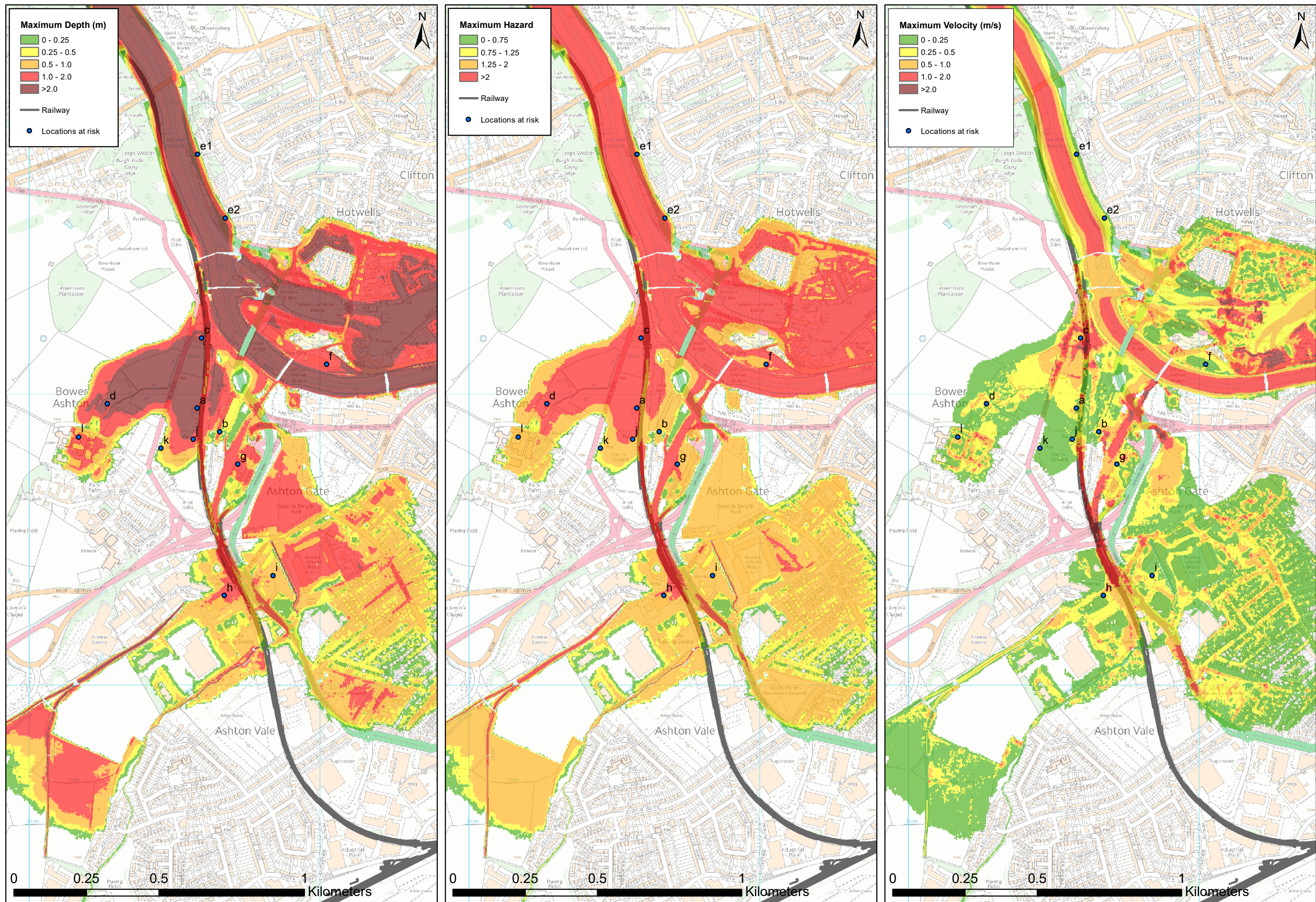


Figure N-29: Pre Development, 1000year return period event in 2115 ,Tidal



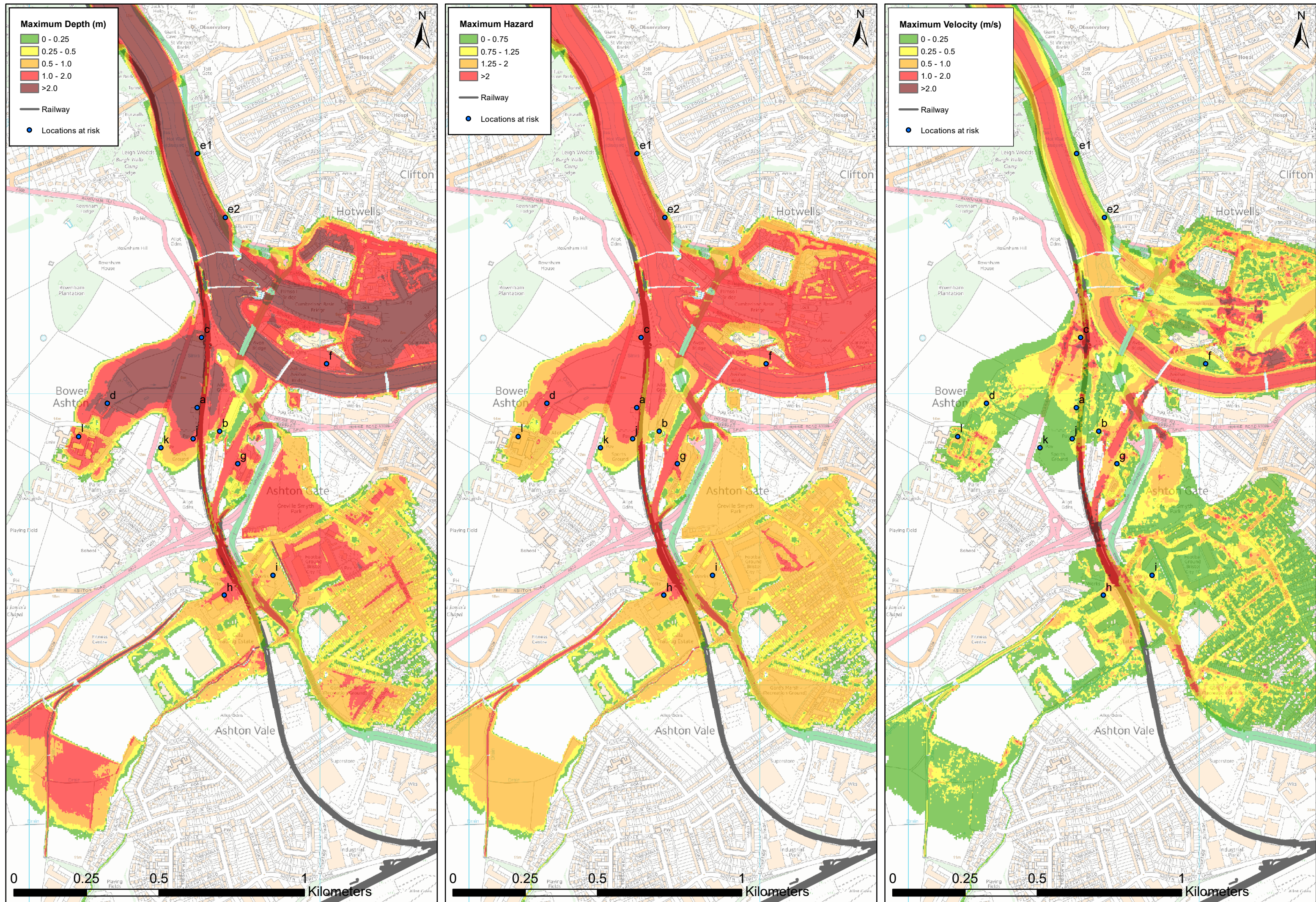


Figure N-30: Post Development, 1000year return period event in 2115 ,Tidal